

A Guide for Newcomers Attending a Concert by The Peterborough Singers at Emmanuel United Church 534 George Street North, Peterborough

- 1. Tickets**
- 2. Getting to the concert**
- 3. The church entrance**
- 4. Getting to the seats**
- 5. Choosing a seat**
- 6. The concert**
- 7. Intermission and breaks and washrooms**
- 8. After the concert**
- 9. Floor plan of the church entrance**
- 10. Floor plan of the main sanctuary**
- 11. Floor plan of the balcony**
- 12. Floor plan of the basement**



Emmanuel United Church shown from George Street



**Community
Foundation**
of Greater Peterborough

We thank the Community Foundation of Greater Peterborough without whom this project would not have been possible.

1. Tickets

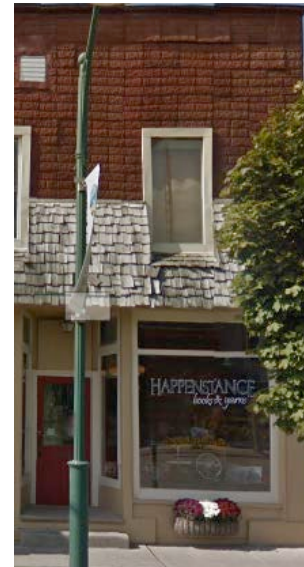
- Tickets cost
 - \$35 (\$40 for Messiah) for adults
 - \$10 for students and children
- Tickets are available at
 - the door of the church starting from 6:00 pm on the day of the concert
 - Pammett's Flower Shop at 208 Charlotte Street
 - Grainger's Cleaners at 885 Lansdowne Street West
 - Happenstance Books and Yarns at 44 Queen Street in Lakefield
 - Stewart Morrison Insurance at 158 Lindsay Street South in Lindsay
 - on our website www.peterboroughsingers.com
 - by calling the Peterborough Singers office at 7 0 5.7 4 5.1 8 2 0.
- Tickets for persons with disabilities are available at a reduced price through the Singers office at 7 0 5.7 4 5.1 8 2 0.
- Support Persons who accompany a person with a disability are eligible for a complimentary ticket. Please phone the Singers office at 7 0 5.7 4 5.1 8 2 0 for your ticket and to arrange seating so you are all together.
- You may reserve wheelchair spaces ahead of time and we will save room for you and your companions. ♿
- Service dogs are welcome. For the comfort of you and your dog please let us know ahead of time so we can reserve seating where there will be room for your dog to relax.
- Many of the singers are allergic to perfume. Please help us to make this a scent free event.



Pammett's Flowers



Grainger's Cleaners



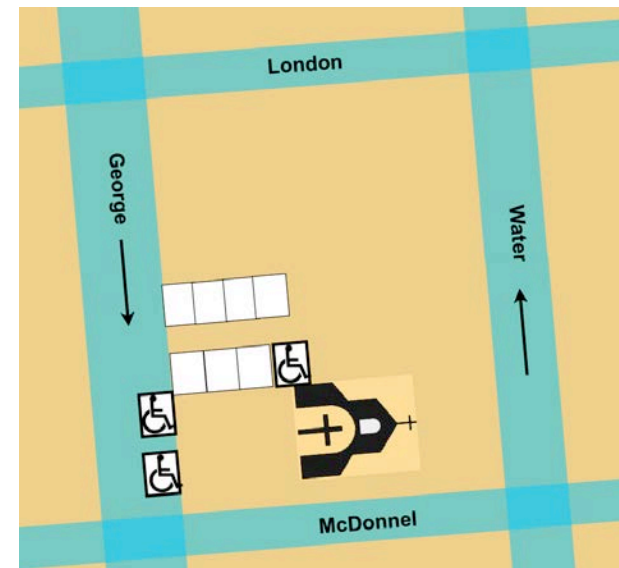
Happenstance Books and Yarns



Stewart Morrison Insurance

2. Getting to the concert

- Emmanuel United Church is at 534 George Street North at the intersection with McDonnel Street. George Street is a one-way street heading south.
- If you are coming by car you may find parking across the street from the church in the parking areas of the three businesses there.
- Or you can park on either side of George Street or London Street.
- Or you can park in the parking lot of PCVS or City Hall (except on Monday evenings).
- There is no parking on Water Street or McDonnel Street.
- There are 2 accessible parking spots on George Street right in front of the church and 1 in the dirt parking lot on the church grounds. ♿
- If you are coming by city bus take number 11 called “Water” or number 6 “Sherbrooke.”



The 3 accessible parking spots.

3. The church entrance

- If you do not have mobility issues enter the church through the red double doors that face George Street.
- There are many steps up to the main sanctuary. If you have mobility issues you will need to use the elevator. The elevator is to the left of the main doors and around the corner. One of the ushers will be there to help you. The elevator does not go up to the balcony. If you don't already have a ticket an usher will help you buy one once you are inside the church. Ushers wear lighted name tags. ♿
- Please do not enter through the covered glass door beyond the elevators. It is the stage entrance and for the use of the choir and guest artists only.
- If you are hoping to sit in a particular area you should arrive at the church early. The doors will open at 6:00 pm.



The elevator door.

Elevator
♿



Main door
with stairs
up to
concert

The red double entry doors and the location of the elevator just around the corner.



Choir door

Elevator door

Please do not enter through the choir door.

4. Getting to the seats

- Ushers will be at the entrance door to take your concert ticket. Ushers wear lighted name tags.
- If you have reserved a ticket you will see a table in the entryway where you can pick it up.
- If you do not already have a ticket you will see a table in the entryway where you can buy one as long as the concert is not already sold out.
- There are two staircases that go up to the main sanctuary.
- The first flight of steps leads to the main floor of the sanctuary and the second flight will take you up to the balcony.
- There is a coat rack on the south side of the sanctuary just before you enter the main doors. It is always a good idea to remove valuables from the pockets of your coat.
- You may head into the sanctuary or the balcony at any time to find a seat.



The entry foyer with the two staircases to the right and left.



The first staircase leads to the sanctuary and the next to the balcony.



The elevator door at sanctuary level.



Ushers wear lighted name tags.

5. Choosing a seat

- You may wish to sit at sanctuary level if you find stairs tiring to climb up and down.
- If you have entered using the elevator you will be on the left side of the sanctuary. If you want to get to the other side go into the sanctuary and along the back of the room. ♿
- If you do not like loud sounds you may wish to sit at the back of the church because the organ pipes are at the front of the church.
- Ushers will give you a program of music to be performed during the concert.
- Some seats will have a Reserved sign on them. Please avoid sitting in those seats unless they are reserved for you.
- If you have reserved a seat an usher will be available to help you find it. ♿
- Ushers wear lighted name tags.
- If you think you may need to leave the sanctuary during the performance please sit close to one of the exit doors so that you don't disturb the people around you.
- The lights will not be dimmed during the concert and the room will not be dark at any time.



The choir will sit at the front of the sanctuary.



The balcony seats extend around the back and sides of the sanctuary.

6. The concert



- The Peterborough Singers and the guest performers will sing and an organist or pianist will accompany them. For some of the songs the Peterborough Singers and the guest soloists will perform together. For some of the songs the guest performers will sing or play by themselves.
- Some of the songs will be quiet but when everyone plays and sings together the songs will be louder especially if the organist plays loudly and there are also percussion and brass players.
- For the November concert there will be a brass band as well as the pipe organ. The audience will be invited to sing with the choir for some of the familiar Christmas songs. The words of the songs will be found in your concert program. You don't have to sing if you don't want to.
- For the November concert the members of the audience will probably clap at the end of each song.
- For Handel's Messiah in December and for the concert in May the members of the audience usually save their applause for just before the intermission and for the end of the concert. That is because the singers are performing one long piece or two long pieces that tell a whole story. The words of the story will be found in your concert program.
- During Handel's Messiah it is a tradition that the members of the audience stand while the choir sings the *Hallelujah Chorus*. It makes a good opportunity to stretch your legs. The audience does not sing with the choir.

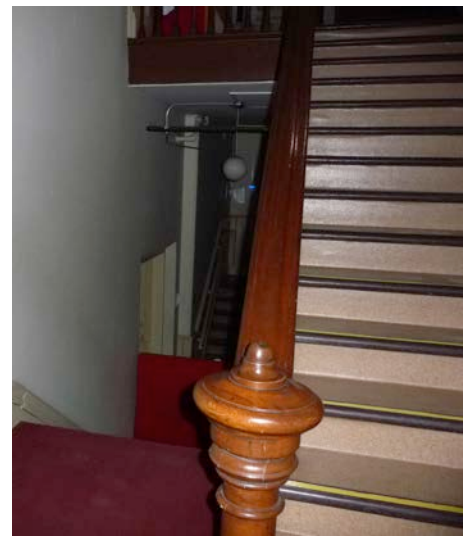


The choir and right balcony seen from under the left balcony.

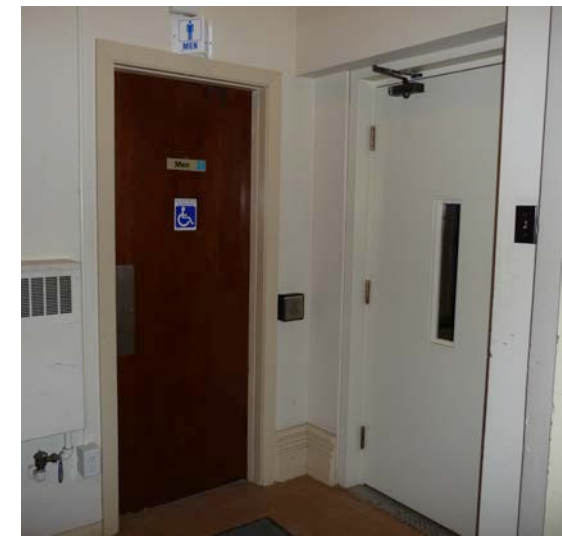
- You can leave the sanctuary if you need to take a break. Please leave between songs. You can walk around in the lobby to get some exercise or you can relax in the Reception Hall in the basement. Stay outside the sanctuary as long as you wish and come back when you're ready.
- After 45 minutes or an hour there will be a break while the performers go downstairs to rest. This intermission will last about 20 minutes. Then everyone will come back into the sanctuary to hear the second half of the concert.
- At the very end of the performance of Handel's Messiah everyone will have a chance to sing the *Hallelujah Chorus* with the choir and the other musicians. Don't sing if you don't want to.


7. Intermission and breaks and washrooms

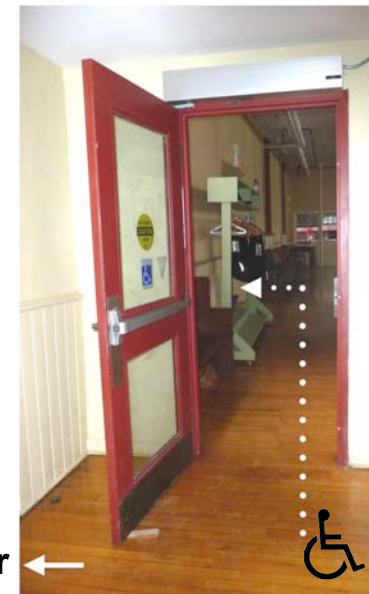
- During the intermission you can walk around in the lobby or walk around inside the sanctuary or go downstairs to use the washrooms. You may even go outside for a few minutes if you need to take a break from the crowds. The performers will be resting in the Reception Hall downstairs so that will not be a suitable place to relax at that time.
- Washroom facilities are in the basement.
- There are two women's washrooms. One is just at the bottom of the south staircase. To find the other go down the north staircase and through the glass door at the bottom of the stairs and then turn left through the next doorway.
- For the women's accessible washroom you will need to take the elevator down to the basement. One of the ushers will be around to help you use the elevator. Then go through the glass door and turn left through the next  doorway.
- There are two men's washrooms. One is just at the bottom of the north staircase beside the elevator. The other is down the same staircase but through the glass door at the bottom of the stairs and then left at the next doorway.
- For the men's accessible washroom you will need to take the elevator down to the basement. One of the ushers will be around to help you use the elevator.  The accessible washroom is right beside the elevator.



You will need to go down the red stairs to the basement to find the washrooms.



The men's accessible washroom is beside the  elevator door.



elevator ←

The women's accessible washroom and a men's washroom are this

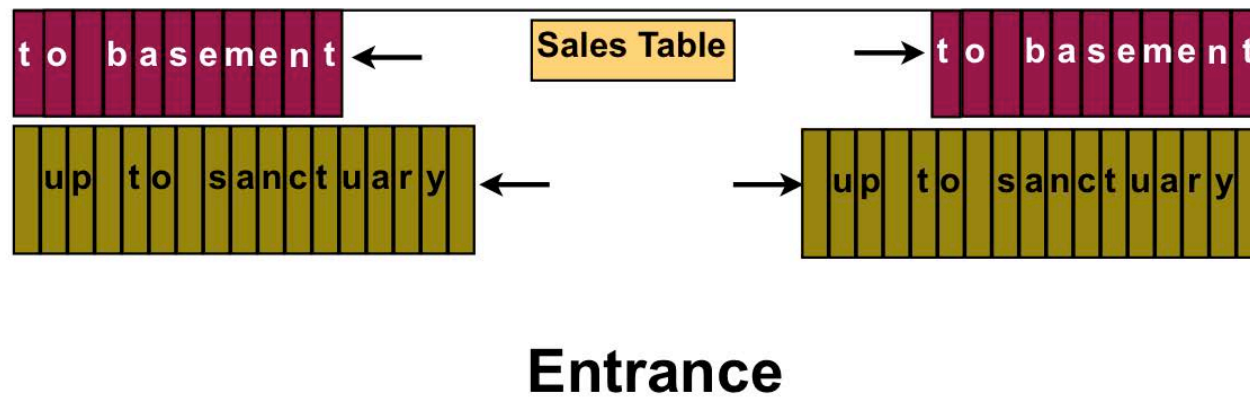
8. After the concert

- When the concert is over everyone will stand up to get ready to leave the sanctuary and the balcony. You may want to rest in your seat until some of the people have left and there is more room to move around and to get down the stairs. That is especially true if you have been sitting in the balcony because there will be a lot of people using the winding staircase all at once.
- Remember to take all your belongings with you.
- After the May concert there will be a party in the Reception Hall in the basement. Please feel free to come down and have some of the food and drink that is provided. There will be snacks or fruit or baked goods to eat and coffee or tea or juice to drink.
- The last city buses leave the bus depot on Simcoe Street after 11:00 pm.



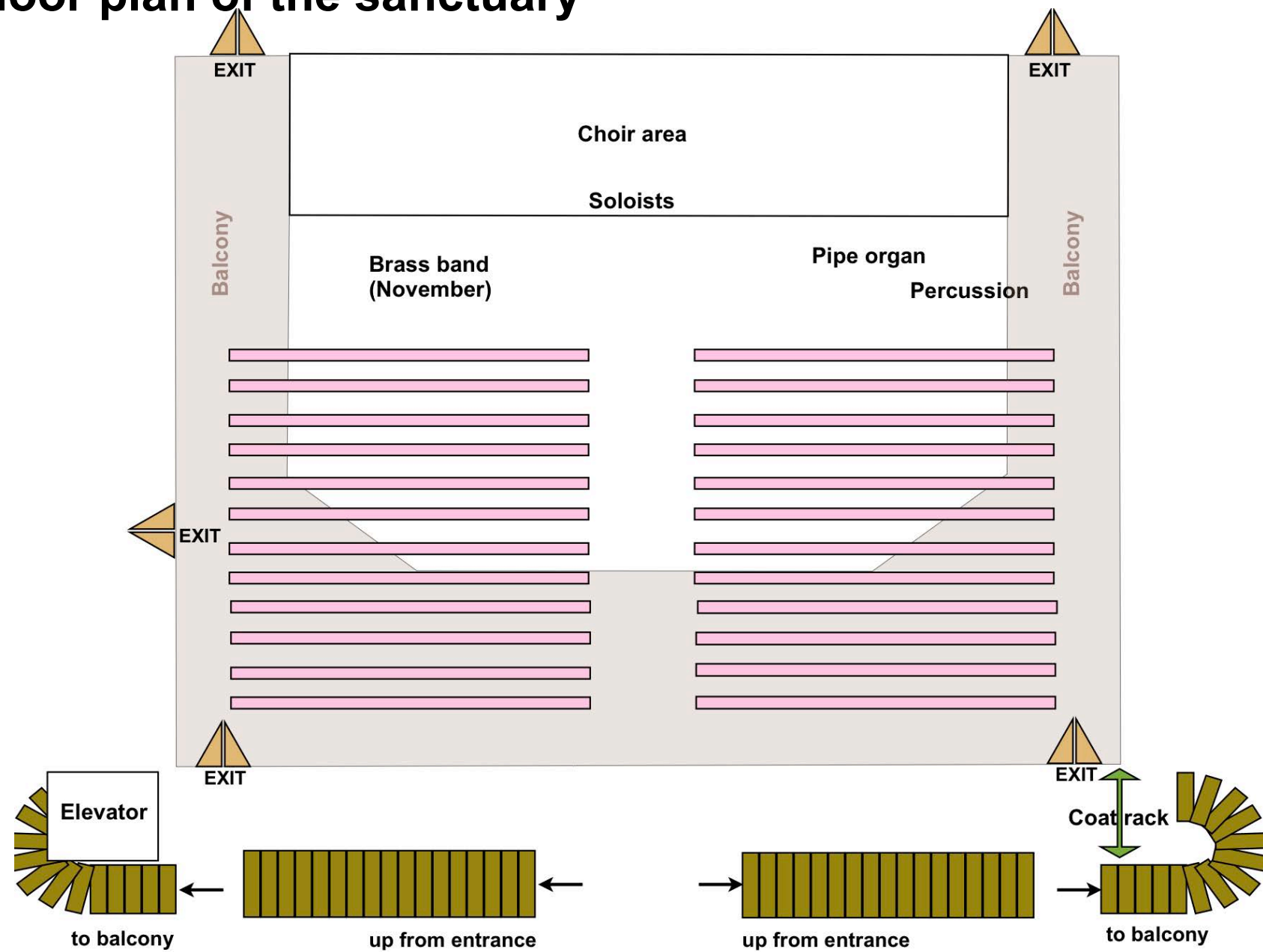
The sanctuary and balcony seen from the choir seats.

9. Floor plan of the church entrance



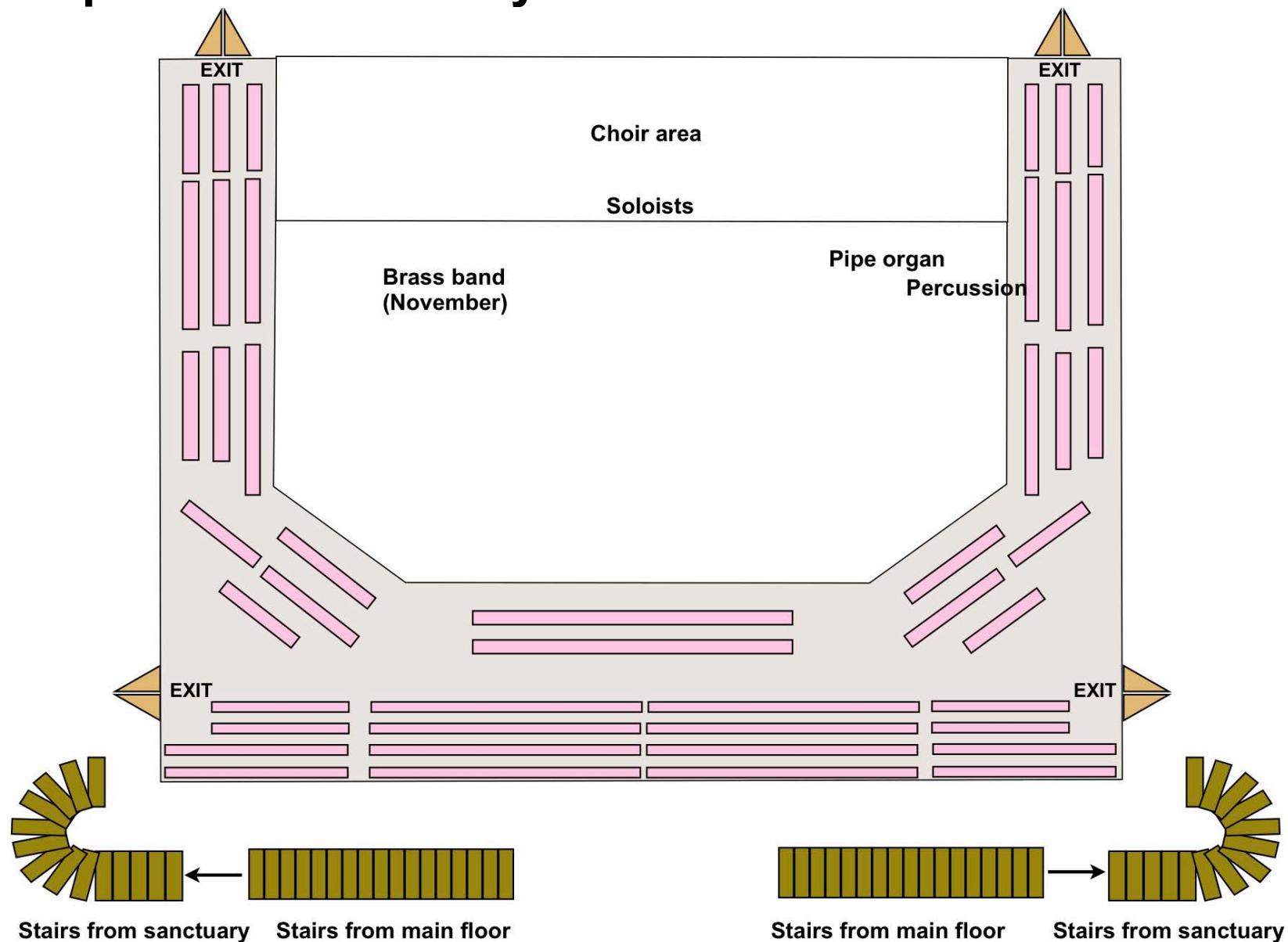
This is the layout of the entrance of Emmanuel United Church.

10. Floor plan of the sanctuary



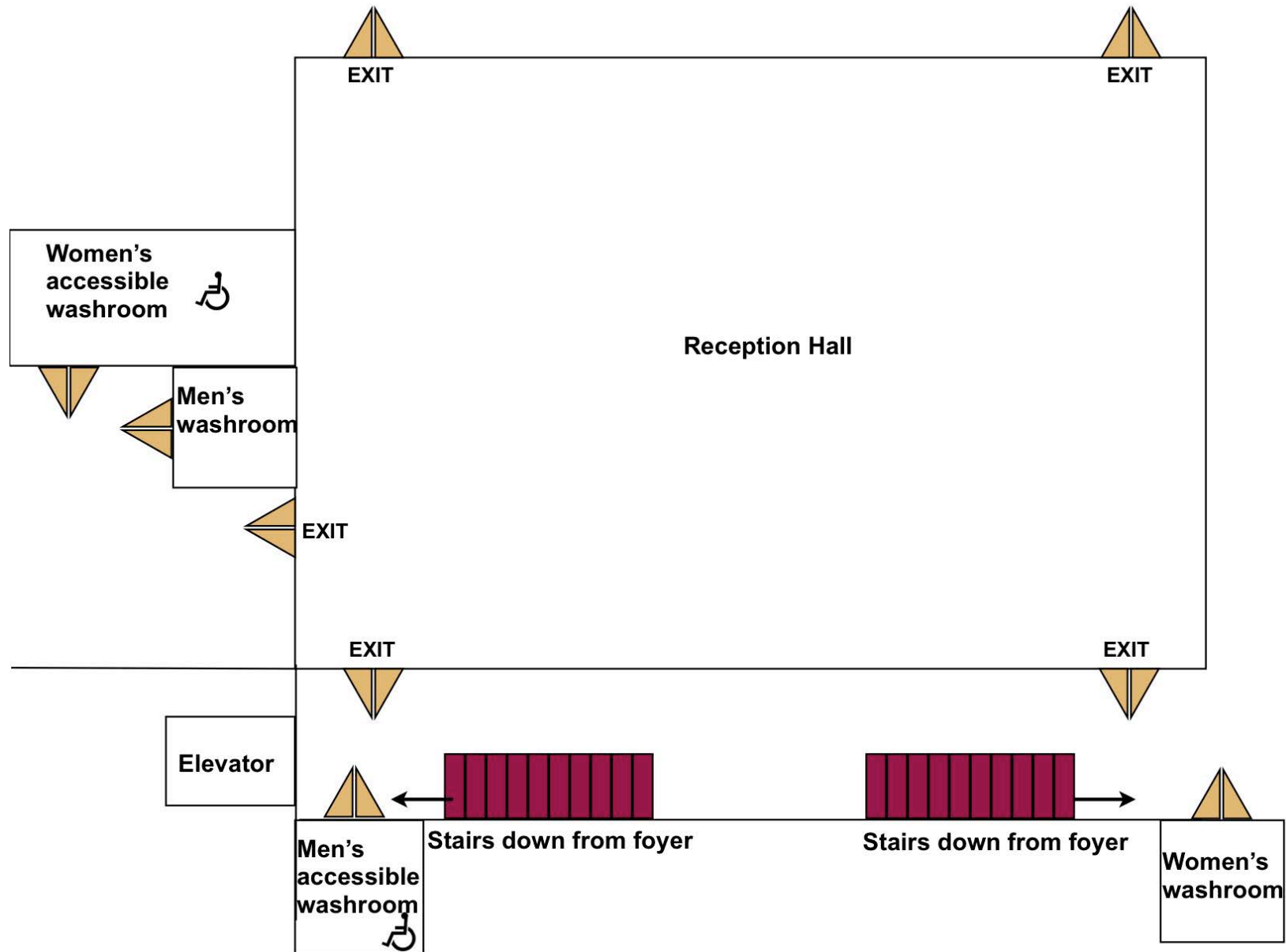
This is the layout of the sanctuary of Emmanuel United Church. It will help you decide where you'd like to sit. We have drawn in only a few of the seats.

11. Floor plan of the balcony



This is the layout of the balcony of Emmanuel United Church. It will help you decide where you'd like to sit. We have drawn in only a few of the seats.

12. Floor plan of the basement



This is the layout of the basement of Emmanuel United Church.
It will help you find the washrooms.